

# Atlas Road

## BEDMINSTER

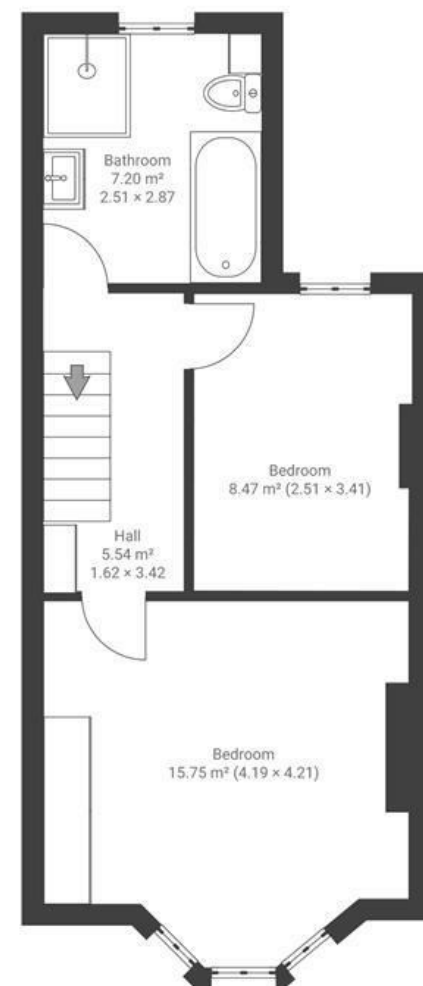
APPROXIMATE FLOOR AREA  
79.7 SQM / 857 SQFT



GROUND FLOOR



FIRST FLOOR



Boardwalk

# Atlas Road , BRISTOL



£440,000



2 Bedrooms



Bristol, BS3

40S



1 Bathrooms

*"We didn't know much about the area before moving here, but now know that Victoria Park is the hidden gem of south Bristol. Safe, quiet, ample parking and let's not forget the amazing park itself. There is nowhere else in Bristol we'd rather be. This house has proven to be ideal for our young family. Whether hosting Christmas parties with friends or enjoying quiet summer evenings in the garden watching hot air balloons, it's given us the perfect start to family life."*

